

56/14

14

A PART OF A P.U.D. PORT CAYMAN A PLAT OF A PORTION OF SECTION 1, TOWNSHIP 47 SOUTH, RANGE 41 EAST AND ALSO BEING A REPLAT OF PARCEL L OF LAKES AT BOCA RATON - PHASE III AS RECORDED IN PLAT BOOK 55, PAGES 1, 2 & 3 OF THE PUBLIC RECORDS OF PALM BEACH COUNTY, FLORIDA PALM BEACH COUNTY, FLORIDA

JOHN A. GRANT, JR., INC. DECEMBER 1984

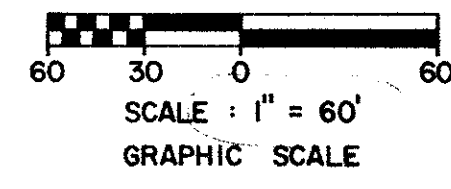
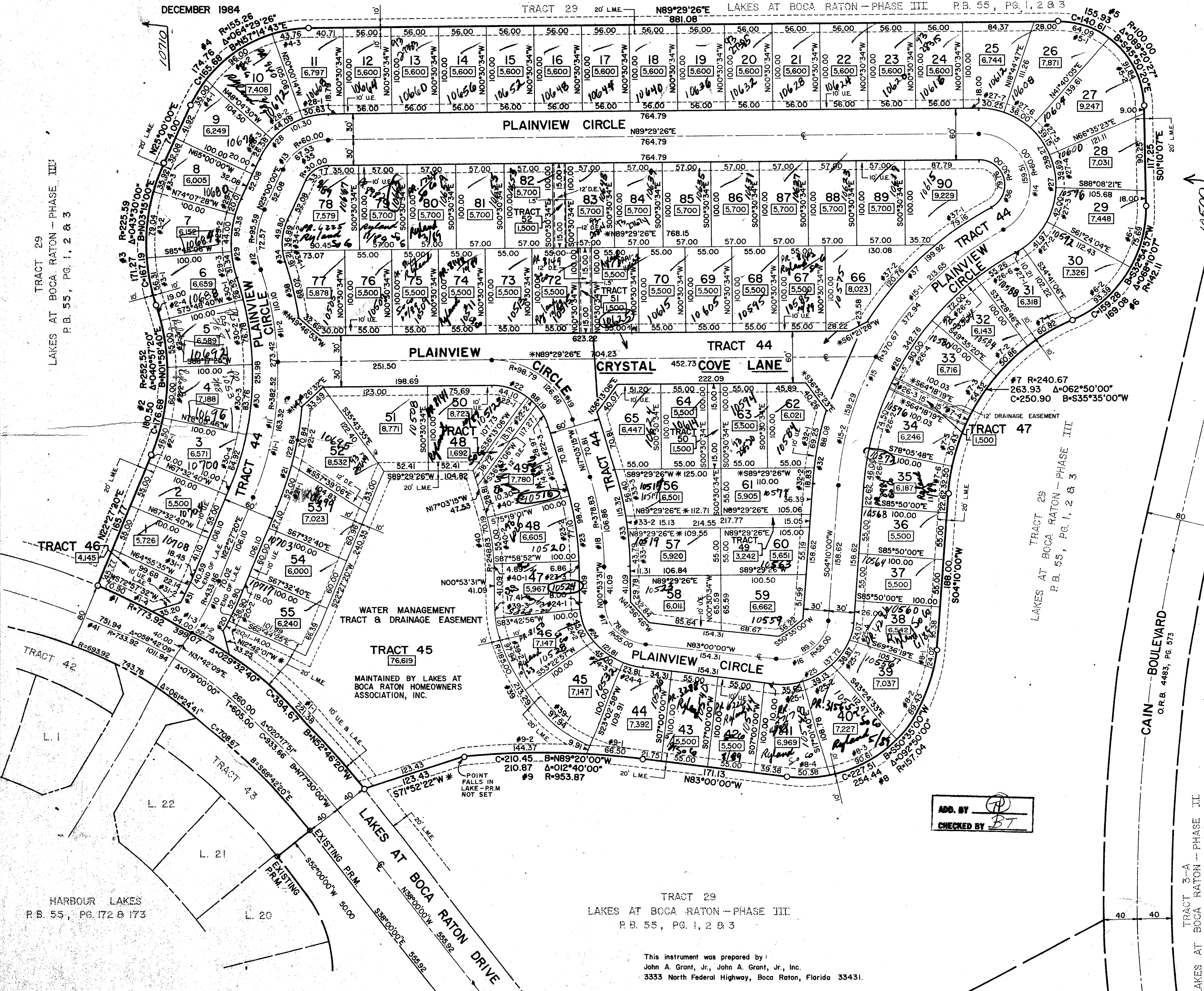
CONSULTING ENGINEERS AND LAND SURVEYORS

BOCA RATON, FLORIDA SHEET 2 OF 3

DRAWING NUMBER

DRAWING NUMBER

DRAWING NUMBER



BOCA CHASE SECTION FOUR P.B. 45, PG. 197 & 198

Port Cayman
BOOK 56 PAGE 14
FLOOD MAP 100'
QUAD C9
PUD NAME

HARBOUR LANDING P.B. 49, PG. 21-23

0388-002

- NOTES:
- Bearings shown hereon are based on bearings shown in the boundary of Parcel L of LAKES AT BOCA RATON - PHASE III as recorded in Plat Book 55, Pages 1 - 3 of the Public Records of Palm Beach County.
 - No buildings or any kind of construction shall be placed on utility or drainage easements.
 - No structures, trees or shrubs shall be placed on drainage easements or lake maintenance easements.
 - Approval of landscaping on utility easements, other than water and sewer, shall be only with the approval of all utilities occupying same.
 - P.R.M. Indicates Permanent Reference Monument.
 - P.C.P. Indicates Permanent Control Point.
 - U.E. Indicates Utility Easement.
 - D.E. Indicates Drainage Easement.
 - L.M.E. Indicates Lake Maintenance Easement.
 - L.A.E. Indicates Limited Access Easement.

* Indicates non-radial course. All other side lot lines drawn to front arcs in the plat are radial to such front arcs.

ADD. BY BT CHECKED BY BT

Ret. 83/12/1 Note

PORT CAYMAN 56/14

This instrument was prepared by: John A. Grant, Jr., John A. Grant, Jr., Inc. 3333 North Federal Highway, Boca Raton, Florida 33431.